



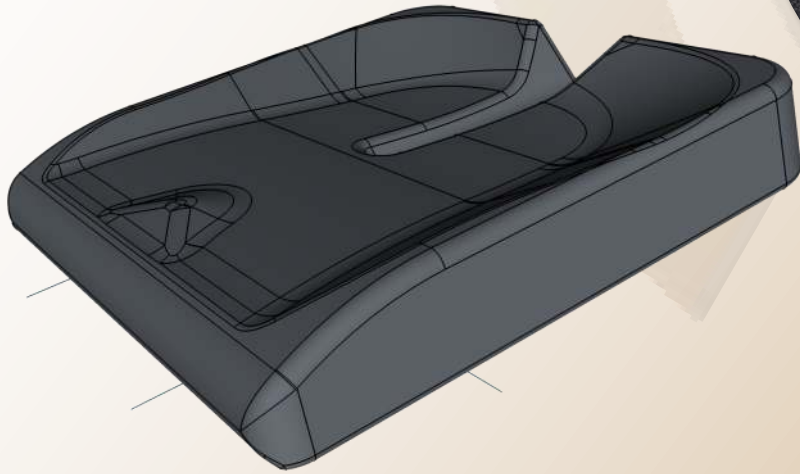
PRECISION
COMFORT

GEL



Features and Benefits

- High-density, high-resilience foam for long lasting support
- Coccyx and sacral relief for longer sitting comfort and skin protection at these vulnerable points
- Super soft silicone gel insert in overlay which forms to the IT and coccyx for pressure reduction and prevents shearing
- Gel-infused viscoelastic upper foam in the overlay to help keep the skin cool and comfortable
- HD high-resilience base foam around the gel insert in the overlay to help support the greater trochanter and femurs for enhanced pressure reduction
- Removable gel overlay designed to stay in place to allow the clinician to modify the base for a custom fit
- Ergonomic contour which helps maintain proper posture and reduces fatigue
- Moisture wicking, four-way stretch, and fluid resistant cover which keeps the person dry and comfortable while allowing the user to form into the layers of visco foam and gel properly



- Custom sizes
- Replaceable and billable base and overlay
- 2 year warranty

| PC Size Chart | | | | | | | | | | | | |
|---------------|-----|-----|-----|-----|-----|-----|-----|-----|-----|-----|-----|-----|
| WIDTH | | | | | | | | | | | | |
| | | 14" | 15" | 16" | 17" | 18" | 19" | 20" | 21" | 22" | 23" | 24" |
| DEPTH | 14" | SD | CS | SD | CS | CS | CS | CS | CS | CS | CS | CS |
| | 15" | CS | CS | CS | CS | CS | CS | CS | CS | CS | CS | CS |
| | 16" | SD | CS | SD | CS | SD | CS | SD | CS | CS | CS | CS |
| | 17" | CS | CS | CS | CS | CS | CS | CS | CS | CS | CS | CS |
| | 18" | SD | CS | SD | CS | SD | CS | SD | CS | SD | CS | SD |
| | 19" | CS | CS | CS | CS | CS | CS | CS | CS | CS | CS | CS |
| | 20" | CS | CS | SD | CS | SD | CS | SD | CS | SD | CS | SD |
| | 21" | CS | CS | CS | CS | CS | CS | CS | CS | CS | CS | CS |
| | 22" | CS | CS | CS | CS | CS | CS | CS | CS | SD | CS | SD |
| | 23" | CS | CS | CS | CS | CS | CS | CS | CS | CS | CS | CS |
| | 24" | CS | CS | CS | CS | CS | CS | CS | CS | SD | CS | SD |

SD Standard Size

CS Custom Size

HCPCS: E2603: 14"x14" - 20"x20"

HCPCS: E2604: 22"x18" - 24"x24"